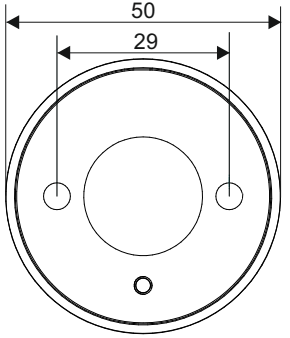


REQUIRED

H2

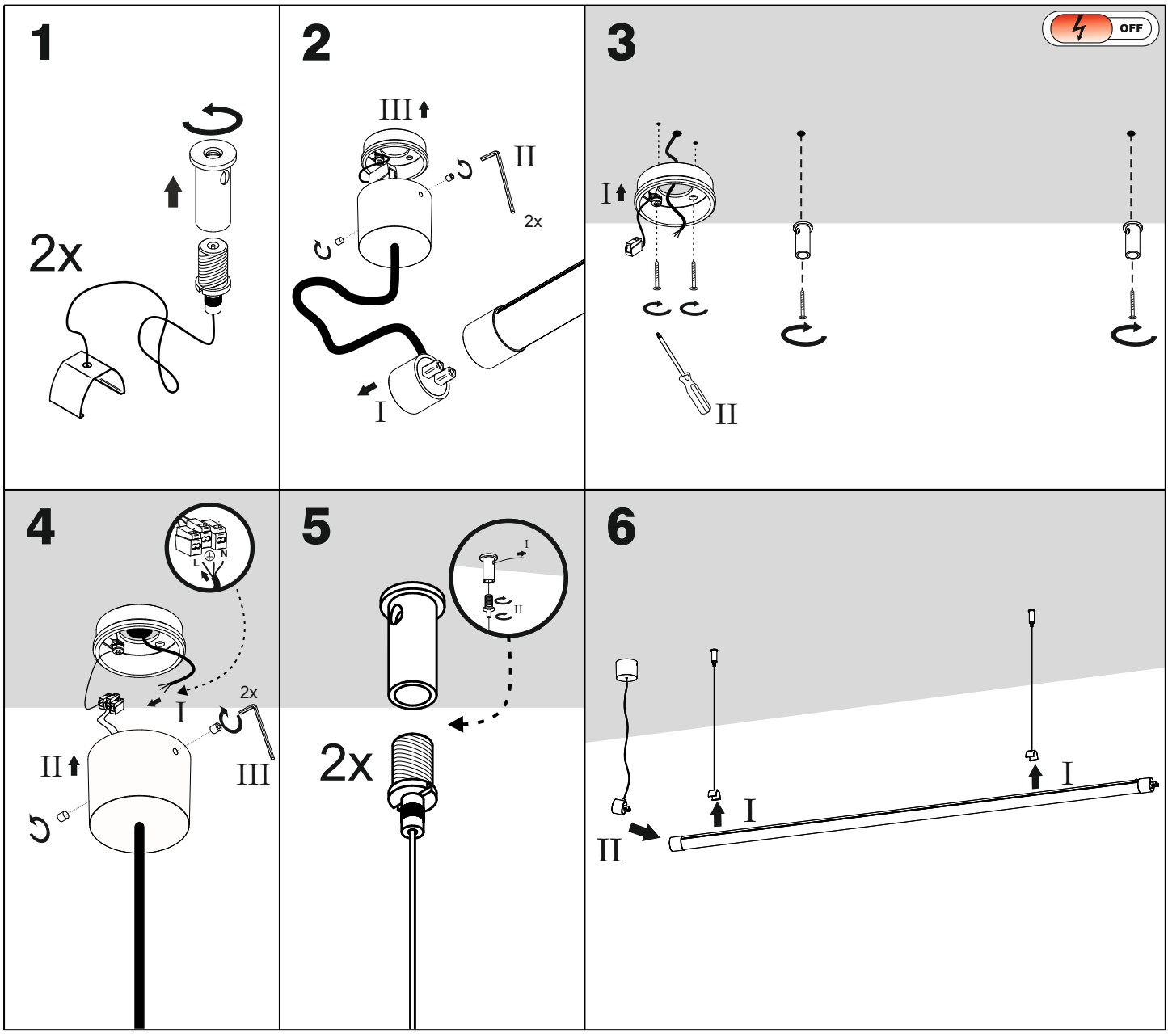


piper connectors

- 15cm flexible connector
- 100cm flexible connector

piper system requirements

- system end cap
- system power end cap

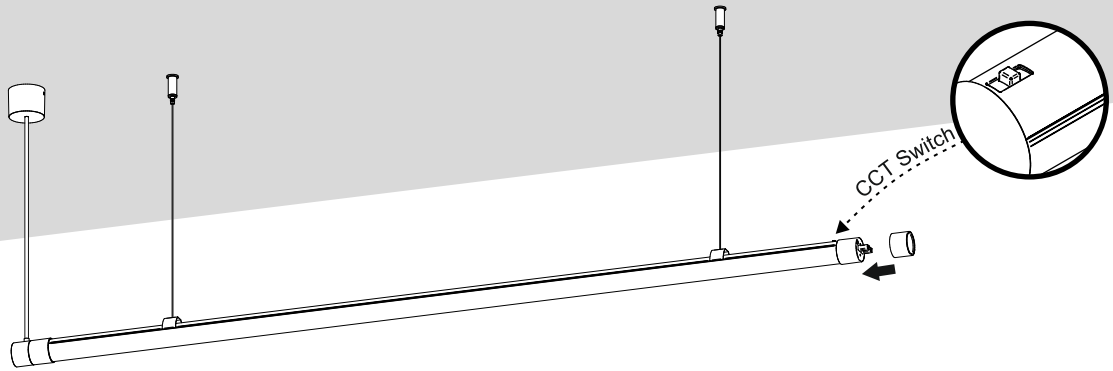


230V

Ten produkt zawiera źródła światła o klasach efektywności energetycznej E. This product contains a light sources of energy efficiency class E. **LED** int

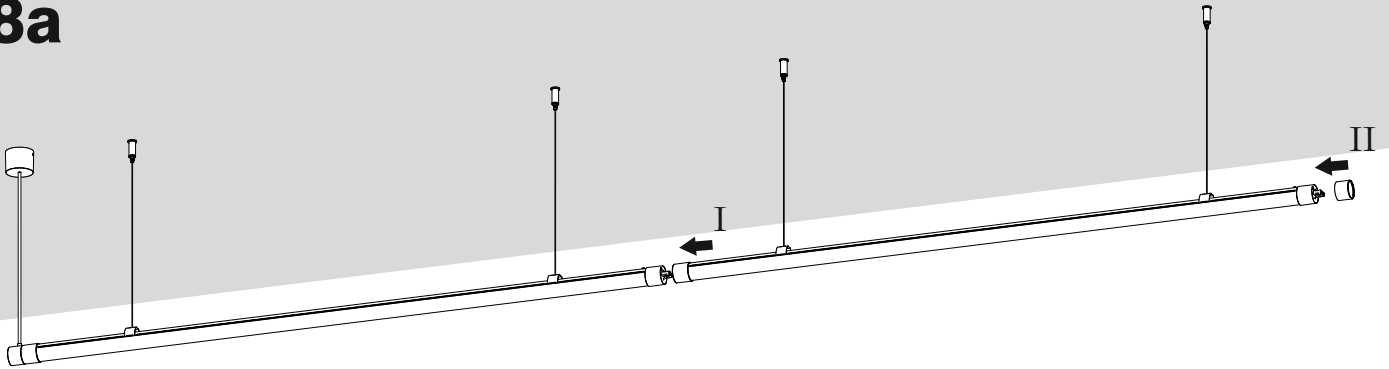
SINGLE-PIECE LUMINAIRE

7

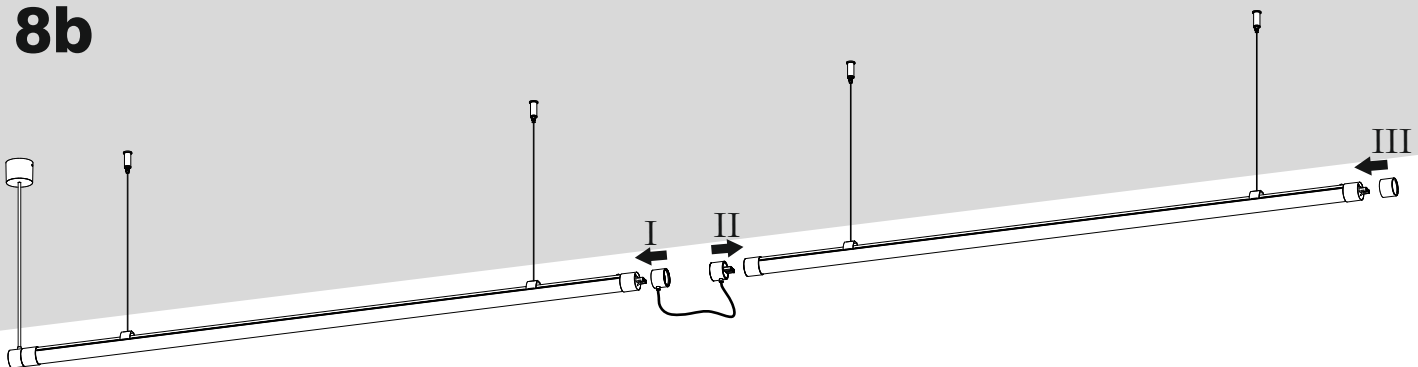


MULTI-ELEMENT LUMINAIRE

8a



8b



Ten produkt zawiera źródła światła o klasach efektywności energetycznej E.
This product contains a light sources of energy efficiency class E.

LED
int