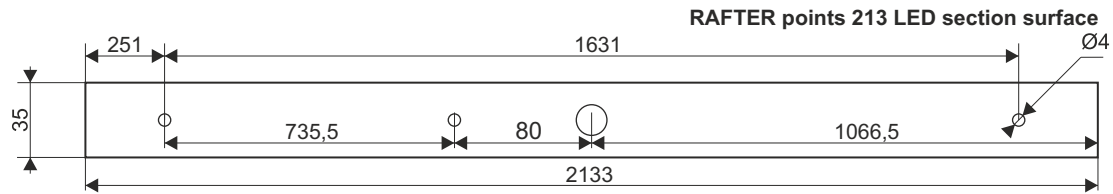
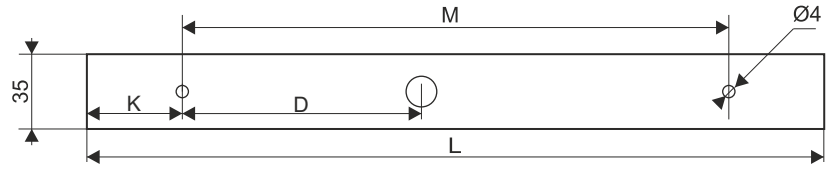


REQUIRED
2x/3x

L [mm]	M [mm]	D [mm]	K [mm]
537	235	37,5	151
936	631	225,5	152,5
1335	933	466,5	201
1734	1232	526	251



1

Diagram showing the removal of the cover from the LED strip.

2

Diagram showing the LED strip being mounted onto the profile. A screw (I) is used to secure the profile to the ceiling. The LED strip is pushed into the profile (II).

3

Diagram showing the wiring connections. The LED strip is pushed into the profile (III). The wiring is connected to the terminal block (I). A detailed view shows the terminal block with L, N, and ground connections. A 'push' arrow indicates the direction of the LED strip.

4

Diagram showing the final assembly of the LED strip into the profile.

Źródło światła zastosowane w tej oprawie oświetleniowej powinno być wymieniane wyłącznie przez producenta lub jego przedstawiciela serwisowego, lub podobnie wykwalifikowaną osobę.
The light source contained in this luminaire shall only be replaced by the manufacturer or his service agent or a similar qualified person.