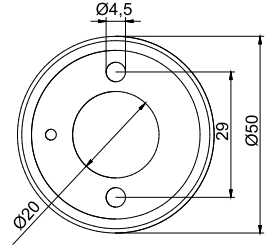
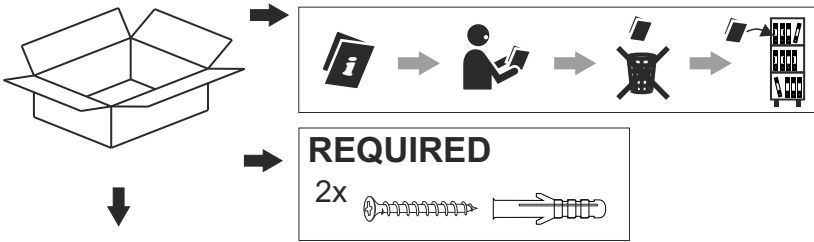


PET next LED spot PET next mini LED spot



<p>1</p> <p>Diagram 1: Preparing the fixture. Part II is inserted into the top of the fixture. Part I is inserted into the side of the fixture. A screwdriver is used to tighten the screw.</p>	<p>2</p> <p>Diagram 2: Mounting the fixture to the ceiling. The fixture is held against the ceiling. Two screws are used to secure it. A screwdriver is used to tighten the screws. A switch is shown in the OFF position.</p>
<p>3</p> <p>Diagram 3: Connecting the wiring. The fixture is held against the ceiling. The wiring is connected to the terminals. A screwdriver is used to tighten the screws. A switch is shown in the ON position.</p> <p>Diagram 4: Final assembly. The fixture is shown fully assembled and ready for use. A switch is shown in the ON position.</p>	<p>4</p> <p>Diagram 4: Final assembly. The fixture is shown fully assembled and ready for use. A switch is shown in the ON position.</p> <p>Źródło światła zastosowane w tej oprawie oświetleniowej powinno być wymieniane wyłącznie przez producenta lub jego przedstawiciela serwisowego, lub podobnie wykwalifikowaną osobę.</p> <p>The light source contained in this luminaire shall only be replaced by the manufacturer or his service agent or a similar qualified person.</p>



Ten produkt zawiera źródła światła o klasie efektywności energetycznej D.
This product contains a light sources of energy efficiency class D.

LED
int